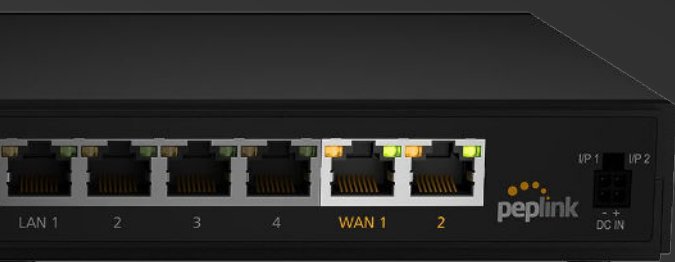




BOne Plus

Supercharged Connectivity for Remote Offices and Small Businesses

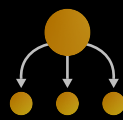


Dual Ethernet WAN architecture keeps you connected even when one of your Internet lines goes down



Seamless **Failover**

Backup connections are always ready to kick in instantly



Automated **Load Balancing**

Optimize network performance by with advanced load balancing algorithms



Traffic Steering

Ensure applications don't stutter by prioritizing important network traffic

Built-in cellular modem for triple-redundancy, low-bandwidth and management applications; includes **eSIM** for zero-touch setup

- VOIP, video calls, POS/payment terminals

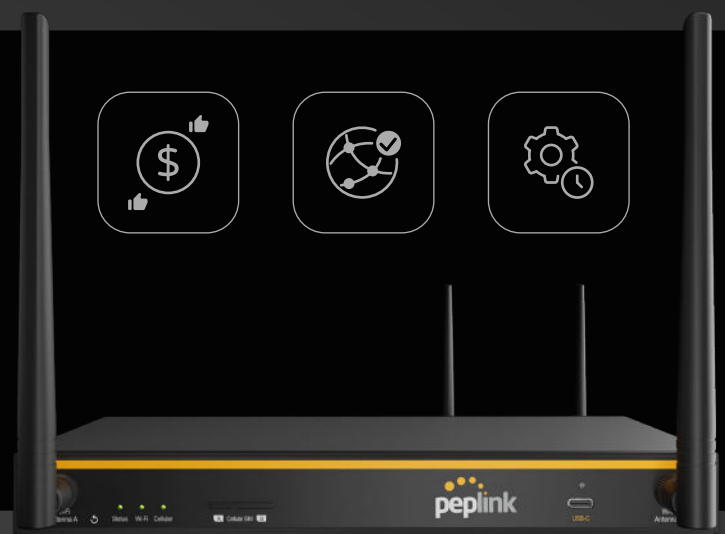


Designed for remote locations, reduce dispatches, site visits, and pre-staging work with **InControl2** and **InTouch**

- Instant Internet connectivity out-of-the-box - SIM or BYO eSIM

Highly cost-effective solution for the most reliable Internet

- Low cost
- Highly reliable
- Long-term support





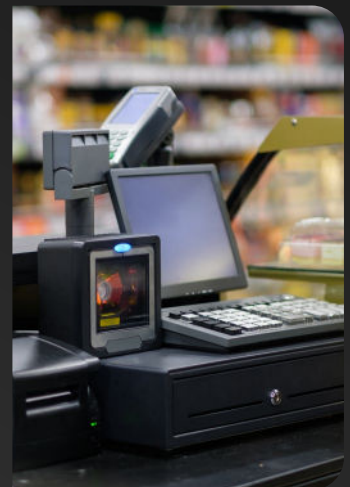
SpeedFusion technology seamlessly bonds multiple Internet connections into one more-reliable Internet feed

Use Cases

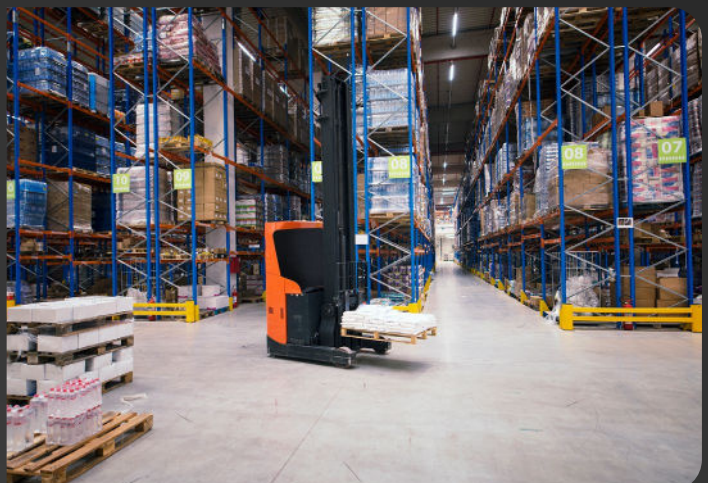
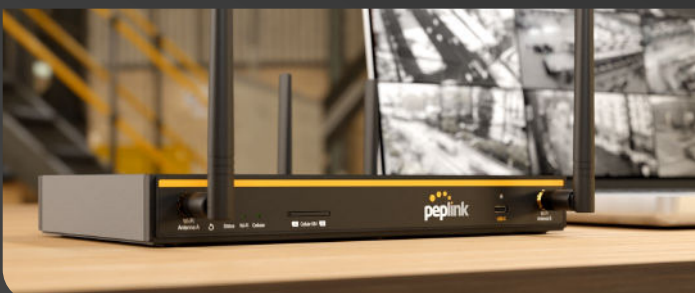
REMOTE OFFICE

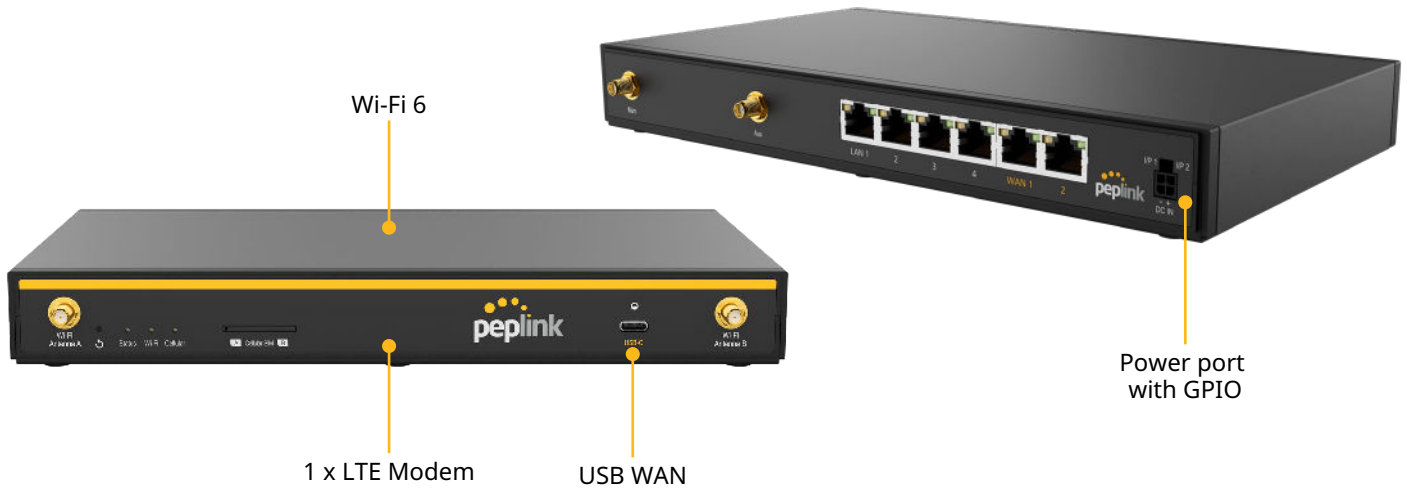


SMALL BUSINESS



WAREHOUSE





Specifications

WAN Interface	2x 10/100/1000M Ethernet 1x Embedded Cellular Modem with a Redundant SIM Slot 1x USB-C Interface	Antenna Connectors	2x SMA Cellular Connectors 2x RP-SMA Wi-Fi Antenna Connectors
LAN Interface	4x 10/100/1000M Ethernet	Power Input	Power Port: 10V – 30V DC AC Adapter: AC Input 100V–240V / DC Output 12V
Wi-Fi Interface	Simultaneous Dual-Band (2.4GHz / 5GHz) Wi-Fi 6, 2X2 MIMO Wi-Fi WAN and/or AP	Power Consumption	6W (nominal), 17W (max. without USB-C output ⁴)
SpeedFusion features	Hot Failover ¹ / Smoothing ¹ / Bandwidth Bonding ¹	Dimension	10.31 x 6.33 x 1.31 inches / 262 x 161 x 33.5 mm
Number of SpeedFusion VPN Peers	2 / 5 ¹	Weight	1.7 pounds / 761 grams
Router Throughput	1Gbps	Operating Temperature	- 40° – 113°F / - 40° – 45°C
SpeedFusion VPN Throughput - No Encryption - 256-bit AES	400 Mbps 200 Mbps	Humidity	10% – 90% (non-condensing)
Recommended Users	1-150	Certifications	FCC, CE, RoHS
AP Controller	Standard	Package Content	1x B One Plus 2x LTE/5G Antennas 2x Dual Band Wi-Fi Antennas 1x 12V 3A 4 Pin Power Supply
Maximum Number of AP Supported	30 / 50 ²	SIM Options	Nano-SIM (4FF) Peplink eSIM BYO eSIM (2 profiles)
Cellular Data Rate ³ (Downlink /Uplink)	CAT-4: 150 Mbps / 50 Mbps	Warranty	1-Year Limited Warranty

¹ Requires a PrimeCare subscription, complimentary for the first year.

² Available with licence add-on (AP-LC-50)

³ Theoretical maximum data rates

⁴ USB-C Output : 5V at 2A can be delivered to power the MAX Adapter or other USB dongles for USB WAN.

Specifications are subject to change without notice.

Ordering Information

Product Code	Regions [^]	LTE Bands	3G Bands
B-ONE-PLUS-LTE-US-T-PRM Embedded Modem: 1 x CAT-4	North America* *US Carrier Certifications: AT&T, T-Mobile, Verizon, FirstNet	B2, B4, B5, B12, B13, B14, B66, B71	B2, B4, B5
B-ONE-PLUS-LTE-E-T-PRM Embedded Modem: 1 x CAT-4	APAC, EMEA	B1, B3, B5, B7, B8, B20, B38, B40, B41	B1, B5, B8
B-ONE-PLUS-LTE-MX-T-PRM Embedded Modem: 1 x CAT-4	Latin America	B1, B2, B3, B4, B5, B7, B8, B28, B40	B1, B2, B3, B4, B5, B8

[^] Regions are for reference only. For specific location compatibility, please refer to the bands.

Featured Add-on

Product Code	Description
PRM-A-1Y / PCP-A-1Y	PrimeCare A / PrimeCare+ A (1-Year)
PRM-A-2Y / PCP-A-2Y	PrimeCare A / PrimeCare+ A (2-Year)
PRM-A-4Y / PCP-A-4Y	PrimeCare A / PrimeCare+ A (4-Year)
ACW-791	Peplink 4-Pin to USB-C Power Cable
ACW-634	10ft DC Power Cable
ACW-235	Indoor LTE/5G Very Wideband Cellular Antenna
ACW-341	Dual-Band Indoor Wi-Fi Omni Antenna in Black (RP-SMA)
ANT-SLM-22G-S-B-6	Slim 22G - 2x2 MIMO Ready Cellular and Wi-Fi Antenna System with GPS (Black)

Deep Dive

Software	Pepwave MAX Firmware	Networking	NAT and IP Forwarding Static Routes Port Forwarding Many to One, One to One NAT NAT Pool SIP ALG, H.323 ALG UPnP, NAT-PMP
WAN	Support for PPPoE, Static IP, DHCP WAN Link Health Check Bandwidth Allowance Monitor Support for Dynamic DNS services		
LAN	DHCP Server for LAN Clients Extended DHCP Option DHCP Reservation DNS Proxy for LAN Clients VLAN on LAN Support	AP Controller	Support for Pepwave AP Series Auto AP Discovery Auto AP Firmware Management AP Profile Configuration Wi-Fi Usage Statistics
Security	Stateful Firewall DoS Prevention Web Blocking	Captive Portal Support	Support for Wired and Wireless LAN clients Support RADIUS Authentication Time and Usage Quotas on Open Access Mode Built-in Customizable Splash Page
Complete VPN Solution	SpeedFusion VPN/SpeedFusion <ul style="list-style-type: none">• Hot Failover• Site-to-Site VPN• 256-bit AES Encryption• Pre-shared Key Authentication• Dynamic Routing X.509 Certificate Support IPsec VPN (Network-to-Network)	Device Management	Web Administrative Interface Command Line Interface InControl Cloud Management Email Notification Active Client & Session Lists Bandwidth Usage Statistics Syslog Service SNMP v1, v2c and v3
Advanced QoS	Individual Bandwidth Limit Application Prioritization <ul style="list-style-type: none">• SIP, HTTPS, VPN QoS• Custom Application QoS		