

DS-2CD2722FWD-IZS

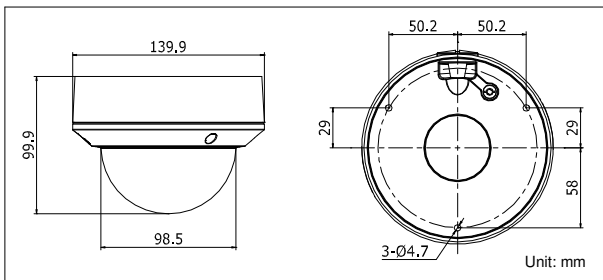
2 MP WDR Dome Network Camera with IR



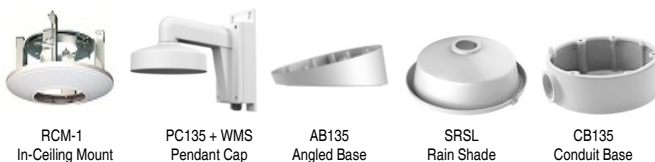
Key Features

- 2 Megapixel High Resolution
- Full HD1080p Video
- Dual Video Streams
- 2.8 mm to 12 mm Motorized Lens
- 120 dB Wide Dynamic Range
- 3D Digital Noise Reduction
- Smart Features
- PoE 802.3af
- IR Range 30 Meters (~100 feet)
- IP66 and IK10 Protection
- Audio and Alarm Input/Output
- Edge Storage MicroSD slot, 128 GB

Dimensions



Accessories



Order Model

DS-2CD2722FWD-IZS

DS-2CD2722FWD-IZS

Camera	
Image Sensor	1/ 2.8" progressive scan CMOS
Minimum Illumination	Color: 0.014 lux @ (f/1.4,AGC on); B/W: 0 lux with IR
Shutter Speed	1/3 s to 1/10,000 s
Slow Shutter	Yes
Lens	2.8 mm to 12 mm @ f/1.4, motorized lens
Angle of View	106° to 35°
Lens Mount	Φ14
Day/Night	IR cut filter with auto switch/schedule/triggered by alarm
Digital Noise Reduction	3D DNR
Wide Dynamic Range	120 dB
Pan/Tilt /Rotation	Pan: 0° to 355°, tilt: 0° to 75°, rotation: 0° to 355°
Compression Standards	
Video Compression	H.264+/H.264/MJPEG
H.264 Type	Main Profile
Video Bit Rate	32 Kbps to 16 Mbps
Dual Streams	Yes
Audio	G.711/G.722.1/G.726/MP2L2, 64 Kbps (G.711)/16 Kbps (G.722.1)/16 Kbps (G.726)/32 to 128 Kbps (MP2L2)
Image	
Maximum Resolution	1920 x 1080
Frame Rate	30 fps (1920 × 1080, 1280 × 960, 1280 × 720)
Image Settings	Compression, color, saturation, brightness, contrast, sharpness, rotate mode, privacy mask
Back Light Compensation	Yes, zone configured
Region of Interest (ROI)	Yes, 4 regions
Analytics	
Smart Features	Line crossing detection (4 lines), intrusion detection (4 regions)
Network	
Network Storage	NAS (supports NFS,SMB/CIFS), ANR
Alarm Triggers	Motion detection, line crossing detection, intrusion detection, tamper alarm, network disconnect, IP address conflict, storage exception
Protocols	TCP/IP, UDP, ICMP, HTTP, HTTPS, FTP, DHCP, DNS, DDNS, RTP, RTSP, RTCP, PPPoE, NTP, UPnP, SMTP, SNMP, IGMP, 802.1X, QoS, IPv6, Bonjour
Security	Three level user authentication, password authorization, HTTPS and SSH certificate, IEEE802.1X, basic and digest authentication, watermark, IP address filtering, log-in lockout
Standards	ONVIF (PROFILE S, PROFILE G), PSIA, CGI, ISAPI
Interface	
Communication	1 RJ-45 10M/100M Ethernet port
On-Board Storage	Built-in microSD/SDHC/SDXC slot, up to 128 GB
Alarm	1 Alarm I/O
Audio	1 Audio I/O
General	
Operating Conditions	-30° C to 60° C (-22° F to 140° F), humidity 95% or less (non-condensing)
Power	12 VDC ±10%, PoE (802.3af), UL/cUL Listed
Power Consumption	Maximum 5.5 W
IR Range	30 meters (~100 feet)
Ingress Protection	IP67
Impact Protection	IEC60068-275Eh, 20J; EN50102, up to IK10
Dimensions	Φ140 mm × 99.9 mm (Φ5.51" × 3.94")
Weight	1000 g (2.20 lbs)