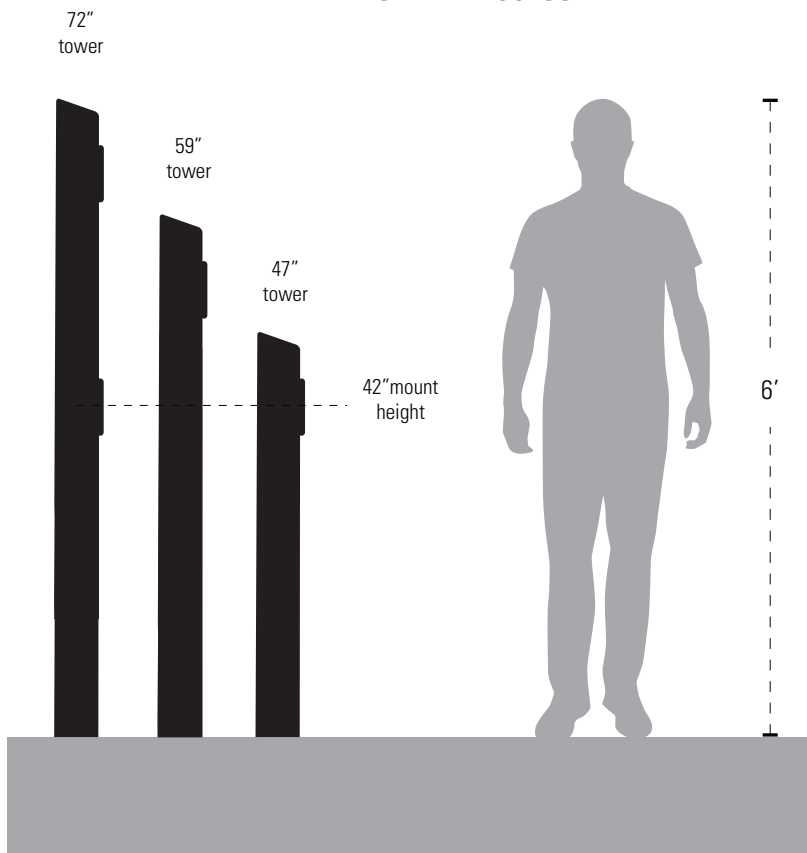


PEDESTRIAN HEIGHT CHART

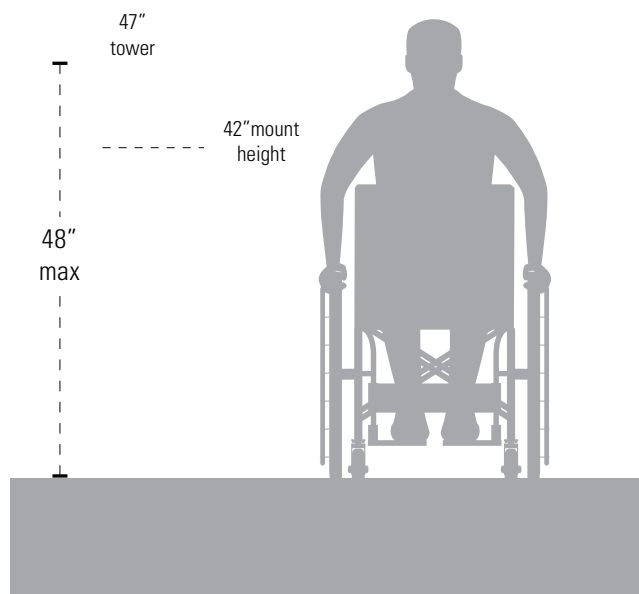
Determine which bollard, cabinet, or gooseneck size is best for your installation requirements and device(s) you plan to use.

Many of our bollards include a single-gang cutout on the front. Additional cutouts are available for a small fee.

PEDESTRIAN ACCESS



ADA ACCESS



ADA REQUIREMENTS

To meet ADA requirements the max mounting height of your lowest access control device cannot exceed 48 inches*

Additional info regarding ADA accessible design can be found on our website at pedestalpro.com/policies/ada-standards

**This content is for quick view only and may not represent the most recent updates from the Department of Justice. For official documentation and requirements please visit: https://www.ada.gov/regs2010/2010ADAStandards/2010ADAStandards_prt.pdf*