

PRODUCT FEATURES

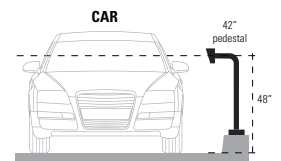
- Single height for cars and pedestrians
- Universal design
- Heavy duty materials
- Steel construction
- Black wrinkle powder coating w/ UV protection
- NDAA, Buy American, or USMCA/CUSMA compliant
- Build To Order (BTO)
- Available direct or through distribution
- ADA compliant

CUSTOM OPTIONS

- Shorten or extend height
- Customize face plate or base plate
- Readily available powder coating colors (white, yellow, bronze, gray, silver)
- Choose any RAL powder color

DESCRIPTION

The heaviest-duty, single-height, telephone-entry pedestal in the security industry. Holds the heaviest telephone entry systems sturdy in the wind. Standing 42" tall, this pedestal is perfectly suited to accommodate gate access for most cars and pedestrians.



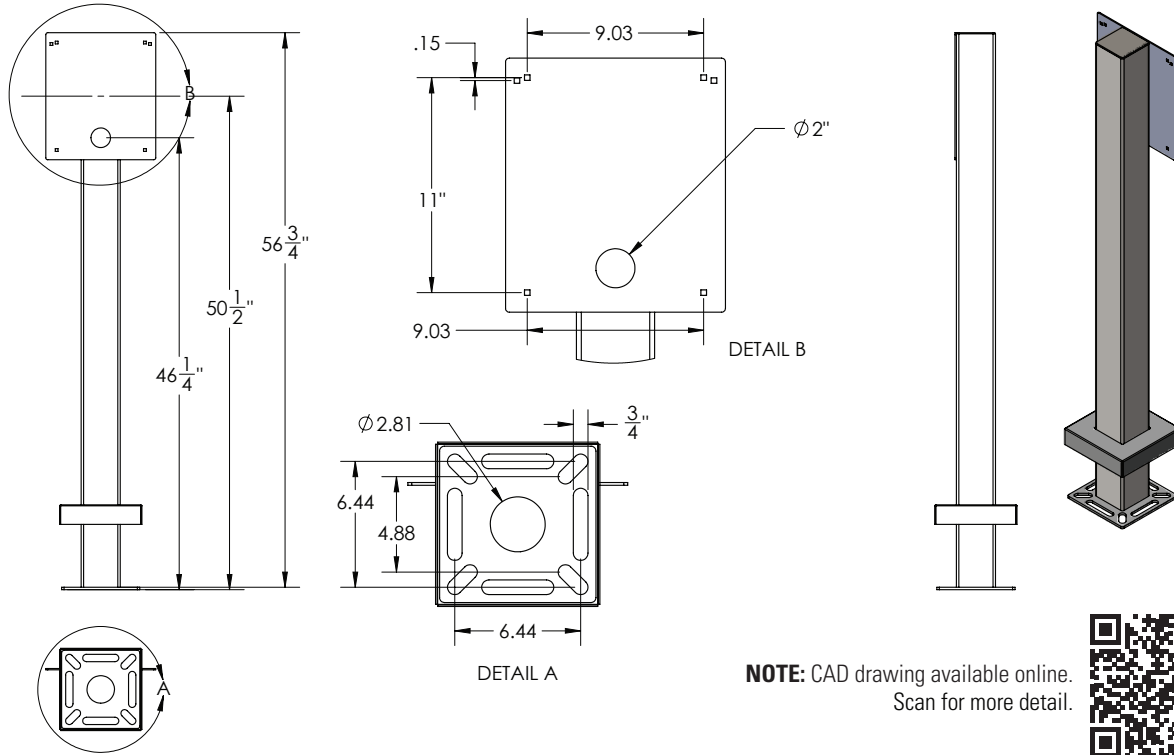
Download Vehicle Height Chart for more details

RECOMMENDED ACCESSORIES

| | | | | | | |
|---|--|---|---|---|---|--|
| <p>BOLT KIT</p> <p>Stud-Anchor-625</p> | <p>BOLT KIT</p> <p>L-Bolt-625</p> | <p>HOUSING</p> <p>Lando-CS-20x14-E</p> | <p>HOUSING</p> <p>MC-PC-14-E-BLK</p> | <p>HOUSING</p> <p>Lando-PC-20x16-E-BLK</p> | <p>BUFFER PLATE</p> <p>CS-ABP-1212</p> | <p>SHIM KIT</p> <p>Shim-Kit-001</p> |
|---|--|---|---|---|---|--|

NOTE: Real time inventory levels are viewable for registered users on pedestalpro.com

Model No. **HD-DK-STRAIGHT**



NOTE: CAD drawing available online.
Scan for more detail.



DATA & SPECS

| | |
|------------------|---|
| Product Style | Bollard |
| Material | Steel |
| Tube | 4" x 4" x .120" wall, steel |
| Face Plate | .125" (11 gauge) |
| Base Plate | .25" plate |
| Cover Plate | .074" (14 gauge) |
| Mounting Method | Pad mount |
| Pretreatment | High pressure/high temperature phosphate wash and rinse |
| Finish | Black wrinkle powder coating (TGIC outdoor polyester) |
| UV Protection | Yes |
| Hardware | 1/4-20 carriage bolts and nuts (qty 4 each, zinc plated) |
| Packaging | Foam wrapped and boxed individually |
| Package Size | 64 x 15 x 13 |
| Weight | 55 lbs |
| Shipping Method | UPS, FedEx, or LTL freight |
| Compliance | NDA, Buy American, or USMCA/CUSMA (see website for details) |
| Warranty | 1 year limited (see website for details) |
| Inventory Status | Build To Order (Fast Track production is available) |

SIMILAR PRODUCTS

