



# JAMB CAM

JAMB MOUNTED COLOR VIDEO CAMERA



## LEARN MORE



Click or scan

## TECHNOLOGY

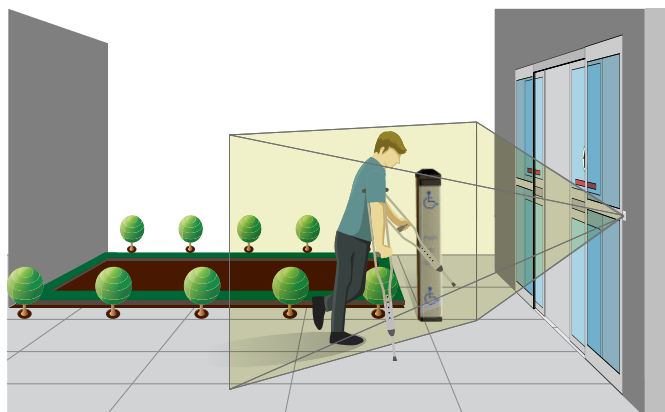


### DESCRIPTION

BEA's **JAMB CAM** is an enhanced definition color video camera designed to monitor the usage and traffic flow of pedestrian doors.

Its sleek, low profile design provides a discreet method for improving loss prevention and limiting liability.

The RCA video output can be seamlessly integrated into most existing video surveillance systems.



### High Resolution Video

Full color video with resolution of 480 x 720 (480p)

### Visual Coverage Of Door Threshold

Wide angle lens for complete view of door and traffic flow



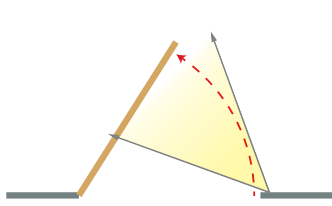
### Easy To Install

Integrated voltage regulator for installation convenience

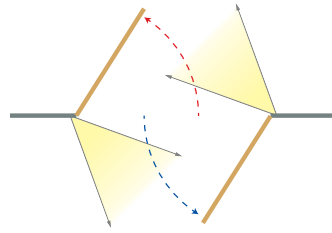
### Low Profile Camera

Low profile design minimizes accidental damage from shopping carts and other errant objects

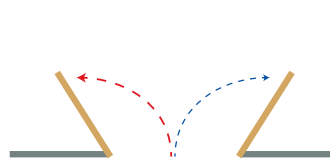
## APPLICATIONS



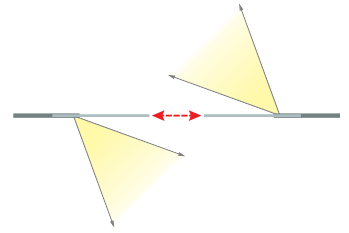
Single Swing



Dual Egress



Simultaneous Pair

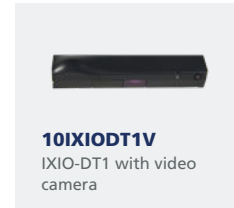
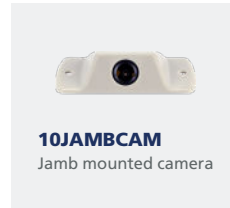


Sliding

## TECHNICAL SPECIFICATIONS

<b>Supply Voltage</b>	6.6 – 36 VDC; ±10% 6.0 – 28 VAC; ±10%
<b>Operating Temperatures</b>	-22 – 140 °F (RH 95% max) (-30 – 60 °C)
<b>Video Output</b>	1.0 (Vp-p) / 75 Ω
<b>Image Sensor</b>	CMOS
<b>Horizontal Resolution</b>	480 TVL
<b>NTSC Output</b>	720 (H) × 480 (W)
<b>Sync System</b>	Inter-Sync
<b>Frame Rate</b>	30 fps
<b>Minimum Illumination</b>	0.01 LUX
<b>AE Control</b>	Auto
<b>Gain Control</b>	Auto
<b>Electronic Shutter</b>	1 s ~ 1/10,000 s
<b>S/N Ratio</b>	> 50 dB
<b>AWB</b>	Auto
<b>Dimensions</b>	1 3/4" (W) × 3" (H) × 3/4" (D)

## PRODUCT SERIES



**DISCLAIMER** Information is supplied upon the condition that the persons receiving it will make their own determination as to its suitability for their purposes prior to use. In no event will BEA be responsible for damages of any nature whatsoever resulting from the use of or reliance upon information from this document or the products to which the information refers. BEA has the right without liability to change descriptions and specifications at any time.

[WWW.BEASENSORS.COM](http://WWW.BEASENSORS.COM)



BEA AMERICAS / RIDC Park West / 100 Enterprise Drive / Pittsburgh, PA  
T 1-800-523-2462 / F 1-888-523-2462 / E info-us@BEAsensors.com

A Halma company