



SUPERSCAN-T INDUSTRIAL

ACTIVE INFRARED PRESENCE SENSOR



LEARN MORE



Click or scan

TECHNOLOGY

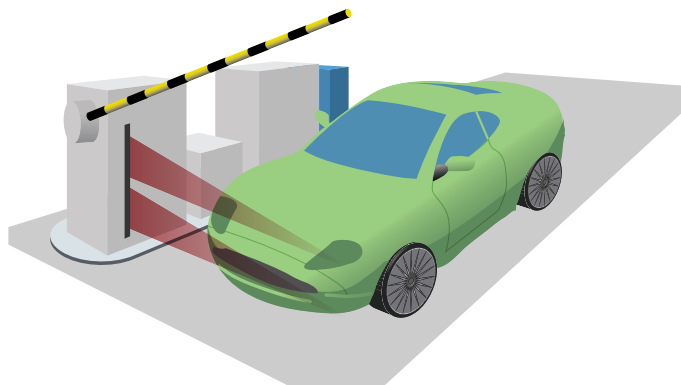
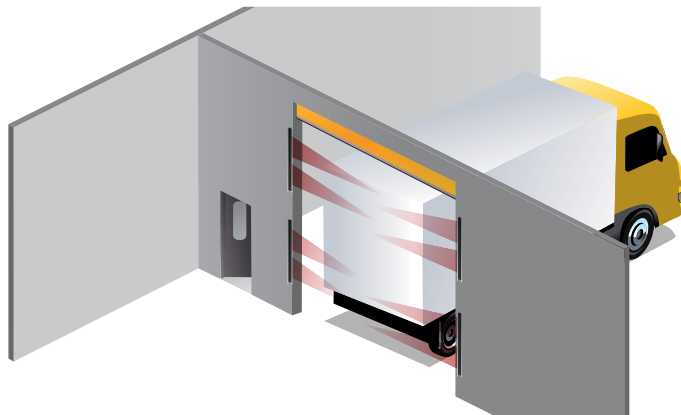


DESCRIPTION

BEA's **SUPERSCAN-T INDUSTRIAL** is an active infrared sensor designed for use in industrial environments that require presence and/or safety detection. This sensor can be used on automatic industrial doors, gates and industrial automation applications.

The **SUPERSCAN-T INDUSTRIAL** uses triangulation to detect the presence of an object, eliminating false detections caused by varying ground and environmental conditions.

In an industrial setting, this versatile sensor can be mounted stationary or on a moving object. Additionally, the **SUPERSCAN-T INDUSTRIAL** can be used as an individual module or daisy chained with up to 8 Secondary modules (9 total modules). This flexibility allows the **SUPERSCAN-T INDUSTRIAL** to be used on both narrow and wide doors and many other off door applications. Each module detection zone can be angled independently.



Fit To The Application

Housing available up to 96 inches; can be field-cut to desired door width

User-Defined Detection Zones

Detection zone of 24 to 96 inches

Adjustable Detection Zone

Can be set to background analysis mode to reduce the change of false detection from faulty environmental situations

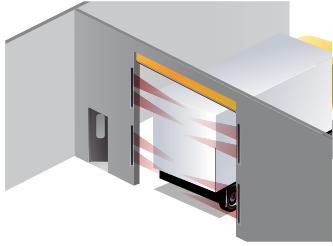
Customizable Hold Time

Relay hold time can be adjusted from 0.1 to 4.5 seconds

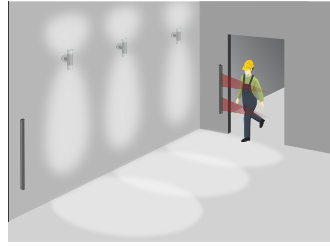
Standards Compliant

Capable of external monitoring

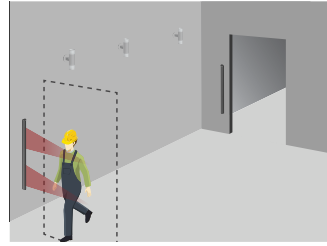
APPLICATIONS



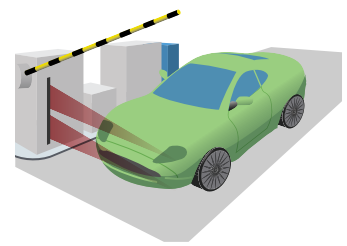
Industrial Doors



Light Activation



Light Deactivation



Barrier Arm Safety

TECHNICAL SPECIFICATIONS

Technology	Active Infrared with background suppression
Detection Mode	Presence
Measurement of Distance	Triangulation
Power Supply	12 – 24 VAC / VDC ±10%
Output Interface; Relay	Relay – max. contact rating: 1A @ 30 V (resistive)
Detection Range	0 – 8'
Distance Adjustment	2 – 8' (rotating cam with linear adjustment)
Max. Mounting Height	8'
Detection Signal Duration	Infinite Presence Detection
Detection Time	< 50 ms
Output Hold Time	Potentiometer range: 0.1 – 4.5 s
Operating Temperature Range	-30 – 140 °F
PCB Dimensions	
Primary	10.91" (W) × 1.5" (H)
Secondary	8.75" (W) × 1.5" (H)
Connector to Door Controller	8-position screw terminal on Primary PCB
Primary-to-Secondary Connection	Flat-ribbon cable with connectors and key lock
Max. Number of Secondaries	8
Functions Selection	Detection mode: NO or NC Normal mode or Background Analysis mode

PRODUCT SERIES



10SSTPRIMARY
Primary sensor



10SSTSECONDARY
Secondary sensor



10SSQD
Quick disconnect harness

SERIES BREAKDOWN

SUPERSCAN-T SERIES	Part Number	Description
SUPERSCAN-T I	10SSTI	1 Primary 34.5 in (end cap to end cap)
	10SSTI40	1 Primary 40 in (end cap to end cap)
	10SSTI42	1 Primary 42 in (end cap to end cap)
	10SSTI48	1 Primary 48 in (end cap to end cap)
SUPERSCAN-T II	10SSTII	1 Primary 1 Secondary 34.5 in (end cap to end cap)
	10SSTII40	1 Primary 1 Secondary 40 in (end cap to end cap)
	10SSTII42	1 Primary 1 Secondary 42 in (end cap to end cap)
	10SSTII44	1 Primary 1 Secondary 44 in (end cap to end cap)
SUPERSCAN-T III	10SSTII48	1 Primary 1 Secondary 48 in (end cap to end cap)
	10SSTIII	1 Primary 2 Secondaries 34.5 in (end cap to end cap)
SUPERSCAN-T CUSTOM SERIES	Part Number	Description
SUPERSCAN-T I	10SSTICUSTOM	1 Primary Custom Length
SUPERSCAN-T II	10SSTIICUSTOM	1 Primary 1 Secondaries Custom Length
SUPERSCAN-T III	10SSTIIICUSTOM	1 Primary 2 Secondaries Custom Length
SUPERSCAN-T IV	10SSTIVCUSTOM	1 Primary 3 Secondaries Custom Length

DISCLAIMER Information is supplied upon the condition that the persons receiving it will make their own determination as to its suitability for their purposes prior to use. In no event will BEA be responsible for damages of any nature whatsoever resulting from the use of or reliance upon information from this document or the products to which the information refers. BEA has the right without liability to change descriptions and specifications at any time.

WWW.BEASENSORS.COM



BEA AMERICAS / RIDC Park West / 100 Enterprise Drive / Pittsburgh, PA
T 1-800-523-2462 / F 1-888-523-2462 / E info-us@BEAsensors.com

A Halma company