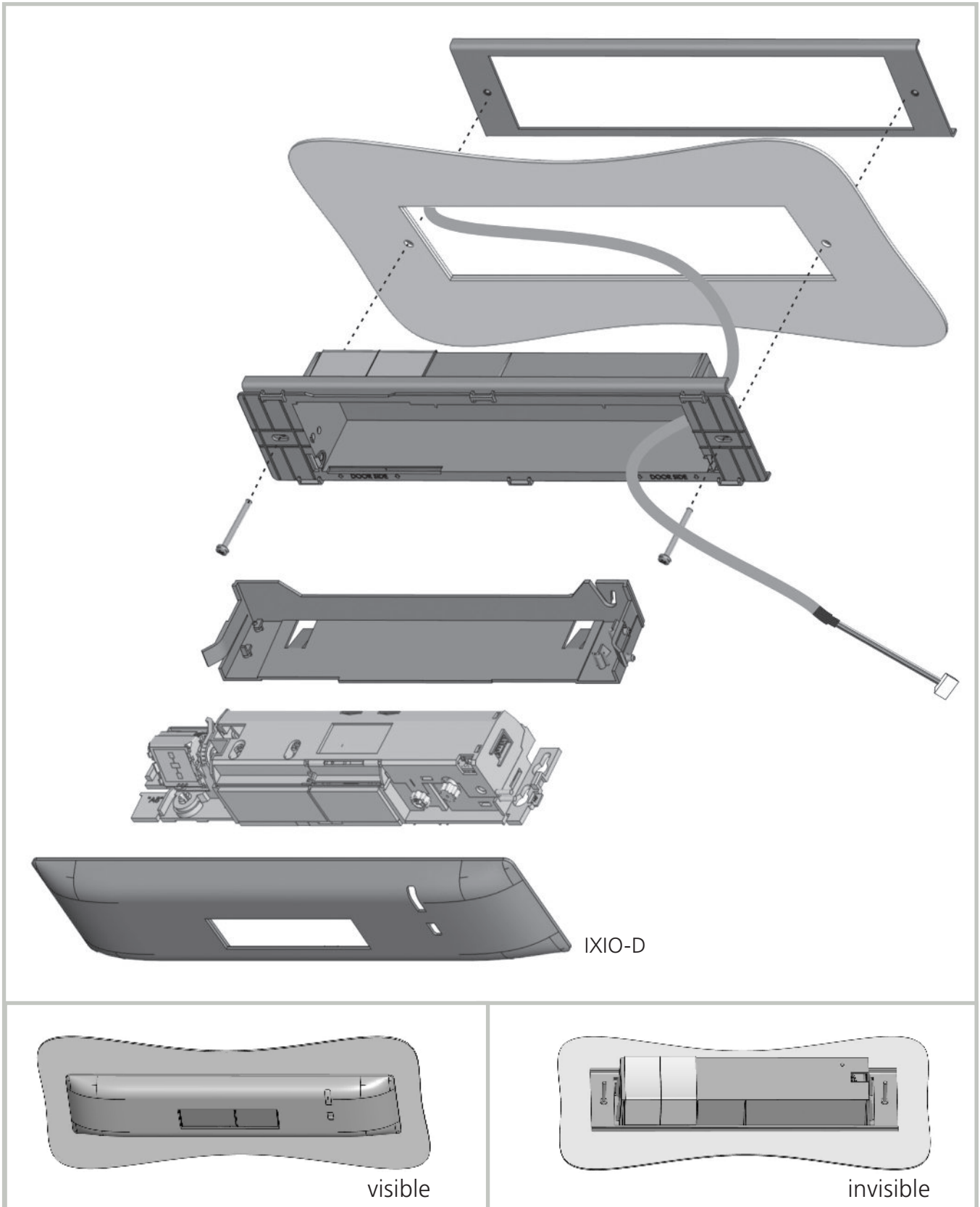


IXIO / VIO CA

Ceiling Accessory for IXIO-D, IXIO-S, VIO-D, VIO-S, VIO-M
(US version)

ASSEMBLY



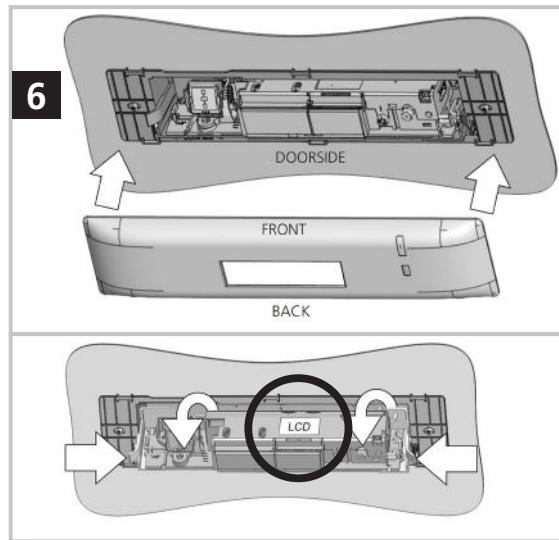
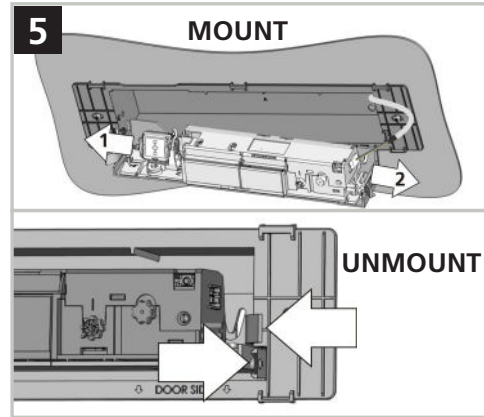
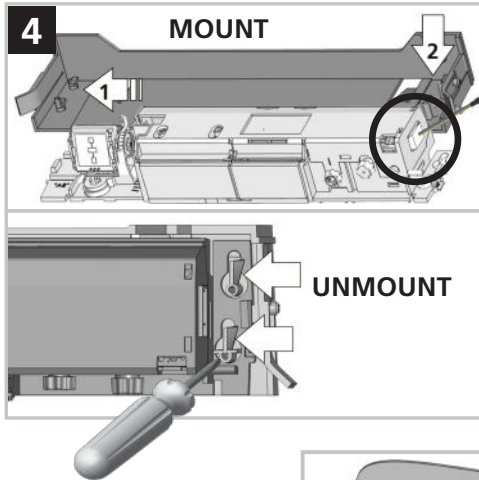
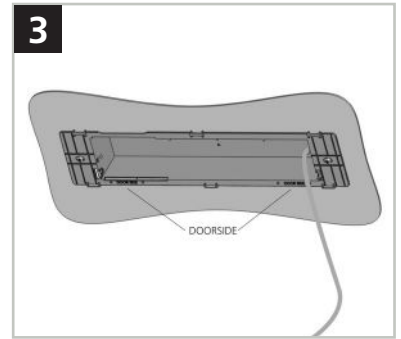
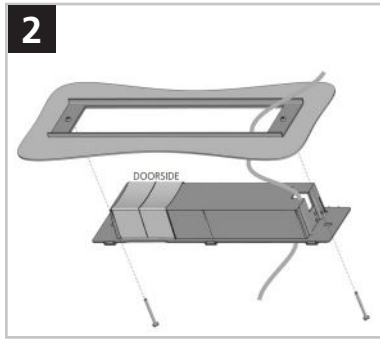
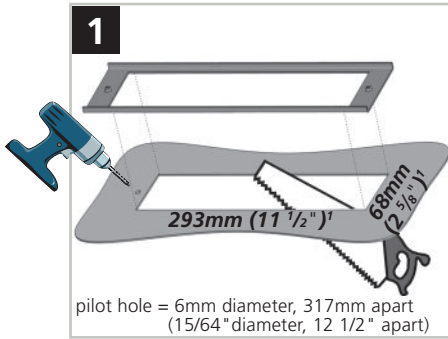
IXIO-D

visible

invisible

INSTALLATION

PLEASE KEEP FOR FURTHER USE – DESIGNED FOR COLOR PRINTING



NOTES:

1. Conversion to inches may require supplementary filing of the cut-out to achieve the appropriate size.

BEA INSTALLATION/SERVICE COMPLIANCE EXPECTATIONS

BEA, the sensor manufacturer, cannot be held responsible for incorrect installations or inappropriate adjustments of the sensor/device; therefore, BEA does not guarantee any use of the sensor outside of its intended purpose.

BEA strongly recommends that installation and service technicians be AAADM-certified for pedestrian doors, IDA-certified for doors/gates, and factory-trained for the type of door/gate system.

Installers and service personnel are responsible for executing a risk assessment following each installation/service performed, ensuring that the sensor system installation is compliant with local, national, and international regulations, codes, and standards.

Once installation or service work is complete, a safety inspection of the door/gate shall be performed per the door/gate manufacturer recommendations and/or per AAADM/ANSI/DASMA guidelines (where applicable) for best industry practices. Safety inspections must be performed during each service call – examples of these safety inspections can be found on an AAADM safety information label (e.g. ANSI/DASMA 102, ANSI/DASMA 107).

Verify that all appropriate industry signage and warning labels are in place.



Tech Support: 1-800-407-4545 | Customer Service: 1-800-523-2462 | General Tech Questions: Tech_Services@beainc.com | Tech Docs: www.BEAinc.com

©BEA | Original Instructions | 75.5741.03 IXIO_VIO CA 20180614

A HALMA COMPANY