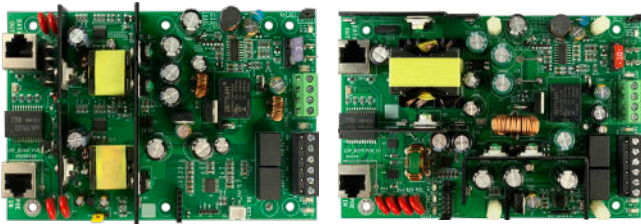


# BITSTREAM™

power • data • single-point fire interface



## Overview

BitStream BX series access control power extractor splitters convert PoE to 12 and 24VDC power for use in access control, surveillance, or other applications.

- **BX50** is compatible with the Single Point Fire Alarm Interface (SFI) mode of the BT500 PoE midspan injector. SFI provides fire alarm control of the BX50 lock output through a single fire alarm disconnect at the BT500. Local battery backup using SLA or LFP batteries provides backup for the 12V system output.
- **BX75** is a fully 802.3BT compatible PoE splitter, providing local fire alarm lock control through a fire alarm disconnect at the BX75. A built-in battery charger for SLA or LFP batteries provides local backup of both the system and lock outputs.

## BX Key Benefits

**Fire Alarm Disconnect** - Single Point Fire Interface (with BX50)

**Built-In Charger** - supports SLA or Lithium Iron Phosphate batteries

**OutSmart™** - visual voltage verification technology

**Built in low battery cutoff** - prevents deep discharge

**FlexPower Modularity** - Works with any LSP enclosure or accessory

**Separate Fault Relays** - Separate PoE and Battery Fault Relays

## Family Specifications

### Outputs:

- System Power Output (12VDC)
- Lock Power Output (BX50: 12/24VDC | BX75: 24VDC)
- Local Fire Disconnect Lock Control (BX75)
- Central Fire Disconnect Lock Control (BX50 via BT500)
- Overload & short circuit protection with auto-restart

### Battery Backup:

- Built-in battery charger for local backup
- Charges Sealed Lead Acid (SLA) or Lithium Iron Phosphate
- Auto switchover to battery with zero transfer time
- Integrated low battery cutoff

### Supervision:

- PoE fail, Battery fail (Separate form "C")
- Low power shutdown when battery voltage too low

### Local Fire Alarm Disconnect Input (BX75):

- DC voltage: 9 to 28VDC, 3 to 15mA
- Dry contact NO/NC
- Optional Fire Alarm latching

### LED Visual Indicators:

- System output, lock output, PoE fault, battery fault, fire alarm activation (BX75), PoE Class (BX75)

### Agency Approvals:

- UL294, UL2610, ULC S318
- FCC PART 15, Subpart B
- ROHS Leadfree / CE

## Electrical Specifications

Power Supply Board	BX50	BX75
Input	PoE 802.3bt, 90W Maximum	
Total Max Output	50W	75W
Max System Power Output	2A/12V	6.2A/12V*
Max Lock Power Output	2A/12V or 1A/24V	3.1A/24V**
Fire Alarm Disconnect	via BT500	Local
Local Battery Backup	System	System & Lock
Battery Type	Sealed Lead Acid (SLA) or Lithium Iron Phosphate (LFP)	
System BTU/Hr	34	41
Full Load Efficiency	84%	88%
Operating Temperature	-4 to +122F (-20 to +50C)	
Board Size (inches)	4 x 6 x 1.18	4 x 6 x 1.78

\*BX75 System Power Output limited to 5.0A when battery is connected

\*\*BX75 Lock Power Output limited to 1.9A when battery connected

## Ordering

Model No*	Description	Enclosure Size
BX50-Boxed	50W extractor splitter	N/A
BX50-E5	50W es, small enclosure	8.5H x 11W x 3D
BX50-E1	50W es, med enclosure	14H x 12W x 4.5D
BX50-D8E1	50W es, 8 aux outputs, med enclosure	14H x 12W x 4.5D
BX75-Boxed	75W extractor splitter	N/A
BX75-C4E1	75W es, 4 lock outputs, med enclosure	14H x 12W x 4.5D
BX75-C8E1	75W es, 8 lock outputs, med enclosure	14H x 12W x 4.5D
BX75-C8D8E1	75W es, 8 lock, 8 aux outputs, med enclosure	14H x 12W x 4.5D

\*BX modularity allows for other configuration options. See model builder examples.

# BX - PoE Access Power Supplies

High Power | FAI | SLA/LFP Battery

## BX50 FEATURES

**SFI** When paired with a BX50 PoE splitter, the BTS can drop lock power on a fire alarm condition from a single fire alarm disconnect at the BTS. This eliminates the need to pull wiring for an FAI connection to each door, saving cost and simplifying installation.

**SLA or LFP Battery Charger** Selectable battery charger allows the use of newer technology LFP batteries, or more readily available and lower cost SLA batteries for local backup of System Power (Lock power only backed up when using a midspan battery set).

**50W DC Output** High power output of 50W combined system/lock power is ideal for 1-2 door EDGE applications

**OutSmart™ Visual Voltage Indication** Output LEDs indicate voltage available - Green/12V or Blue/24V.

**FlexPower Modularity** Works with all LSP FlexPower enclosures and accessory boards.

**On-Board Low Battery Disconnect** Automatically disconnects discharged battery sets to prevent deep discharge and protects sensitive electronics.

## BX75 FEATURES

**Local Fire Alarm Connection** Allows fire alarm control of locks with any PoE source. (Note the BX75 is not compatible with the BT500's SFI mode).

**SLA or LFP Battery Charger** Selectable battery charger allows the use of newer technology LFP batteries, or more readily available and lower cost SLA batteries for local backup of System and Lock Power.

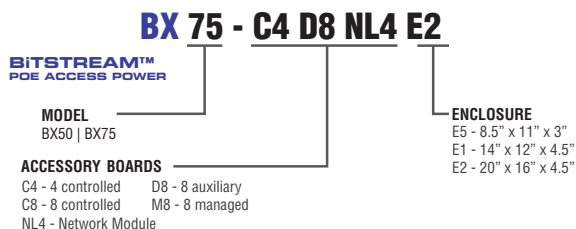
**75W DC Output** High power output of 75W combined system/lock power is ideal for 1-4 door Access Control or EDGE applications

**OutSmart™ Visual Voltage Indication** Output LEDs indicate voltage available - Green/12V or Blue/24V.

**FlexPower Modularity** Works with all LSP FlexPower enclosures and accessory boards.

**On-Board Low Battery Disconnect** Automatically disconnects discharged battery sets to prevent deep discharge and protects sensitive electronics.

## MODEL BUILDER



**LifeSafetyPower.com**

(888) 577-2898  
info1@lifesafetypower.com

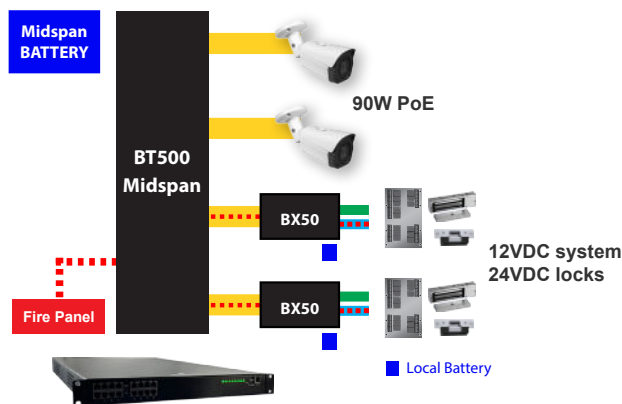
Specifications subject to change without notice.

© 2024 LifeSafety Power. All rights reserved. LifeSafety Power and FlexPower are registered trademarks of LifeSafety Power. All other trademarks and copyrights are the property of their respective owners.  
P01-1117 Rev A02 06/24

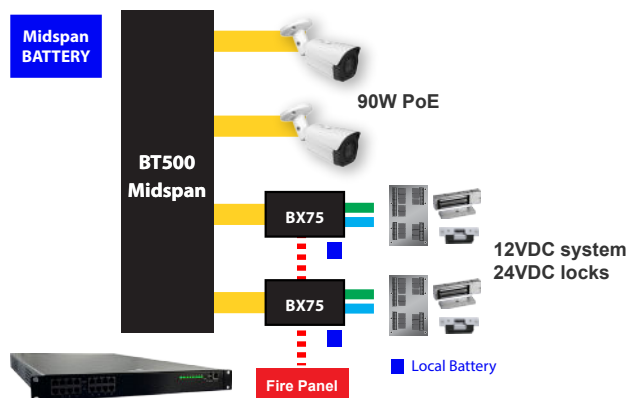
**LifeSafety Power**  
10027 S. 51st Street, Suite 102  
Phoenix, AZ 85044 USA

## APPLICATIONS

### BX50 Proprietary Single-point Fire Interface™



### BX75 Local Fire Alarm Disconnect



## BITSTREAM FAMILY



**BTS500** PoE Endspan Switch  
8 PoE network devices  
500W total power, 90W per port  
Local fire alarm disconnect for UL294 compliance

**BT500** PoE Midspan Injector  
8 or 16 PoE compliant devices  
500W total power, 90W per port  
Local fire alarm disconnect for UL294 compliance

See BitStream Midspan and Switch datasheets for more information.

### IMPORTANT

All information, including illustrations, is believed to be reliable. Users, however, should independently evaluate the suitability of each product for their particular application. LifeSafety Power makes no warranties as to the accuracy or completeness of the information, and disclaims any liability regarding its use. LifeSafety Power's only obligations are those in the LifeSafety Power Standard Terms and Conditions of Sale for this product, and in no case will LifeSafety Power or its distributors be liable for any incidental, indirect, or consequential damages arising from the sale, resale, use, or misuse of the product. Specifications are subject to change without notice. In addition, LifeSafety Power reserves the right to make changes—without notification to Buyer—to processing or materials that do not affect compliance with any applicable specification.