

Secure I/O 2

Secure Door Control Module



Secure I/O 2 is a secure door control module that provides added level of security over edge-based distributed access control systems. The device receives the encrypted signal from Suprema IP access readers to control the lock to provide extra layer of security for the door control. Packed in the ultra-compact form factor, Secure I/O 2 easily fits in limited spaces.

Features



Ultra-compact size

· Easy to install in smaller spaces



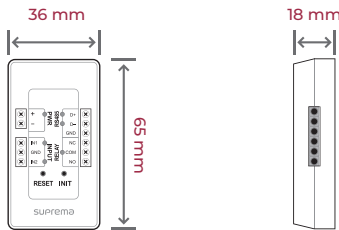
Encrypted communication with connected device

· AES-128 encryption



Industry standard communication via OSDP

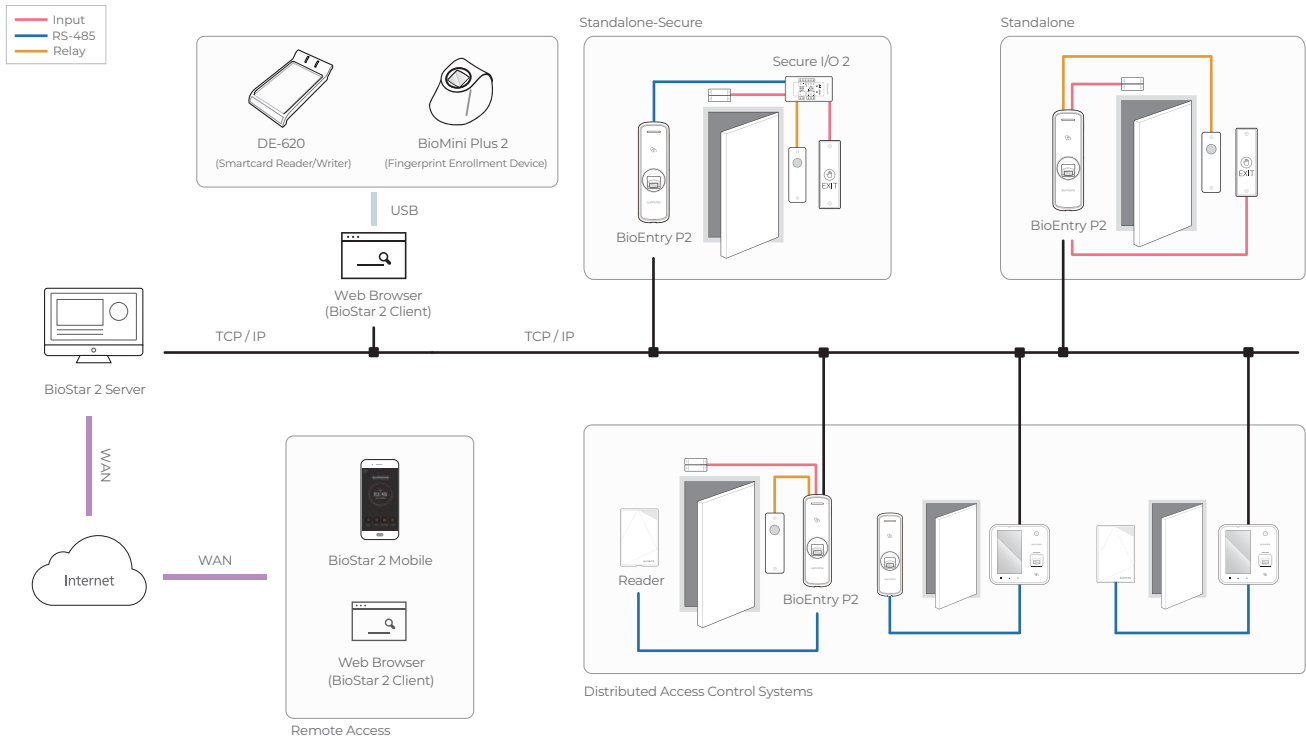
Dimensions



Specifications

CPU	Cortex M3 72MHz
Memory	128 KB Flash + 20 KB RAM
LED	Multi-Color
Operating temperature	-20°C ~ 50°C (-4°F ~ 122°F)
Storage temperature	-40°C ~ 70°C (-40°F ~ 158°F)
Operating humidity	0% ~ 80%, non-condensing
Storage humidity	0% ~ 90%, non-condensing
Dimension (WxH xD, mm)	36 x 65 x 18 (mm)
Weight	37 g
RS-485	1ch
RS-485 Communication Protocol	OSDP V2 Compliant
TTL Input	2 ch
Relay	1 Relay
Power	Voltage: 12 Vdc Current: Max. 0.5 A
Certificates	CE, UKCA, FCC, KC, RoHS, REACH, WEEE, ETL Listed to UL 294

System Configurations



Suprema Inc.

17F Parkview Tower, 248, Jeongjail-ro, Bundang-gu, Seongnam-si, Gyeonggi-do, 13554, Republic of Korea
T +82 31 783 4502 **W** www.supremainc.com



For more information visit our website below by scanning the QR code.
<https://www.supremainc.com/en/about/contact-us.asp>