

BioStation L2

Fingerprint IP Access Terminal



Suprema BioStation L2 is an essential fingerprint terminal that provides comprehensive access control and time attendance features based on Suprema's next generation biometric technology and security platform. Designed for all type of time-attendance applications, BioStation L2 provides exceptional value by combining World's best Suprema fingerprint algorithm, high performance and enhanced security features.

BioStation L2

Fingerprint IP Access Terminal

Features



Best-in-class Performance

- Latest Suprema algorithm
- 1.2GHz Quad-Core CPU
- Up to 150,000 matches per second (genuine)



Improved Accuracy & Security

- New advanced LFD(live finger detection) technique
- Improved OP5 optical sensor and algorithm



Expanded Capacity

- Max. 500k users/1 million text logs
- Large memory: 2GB Flash + 256 MB RAM



Full Time Attendance Features

- 2-inch color LCD with intuitive GUI
- Full time and attendance functionality
- 3 x 4 numeric touch keypad



Versatile Interfaces/RF options

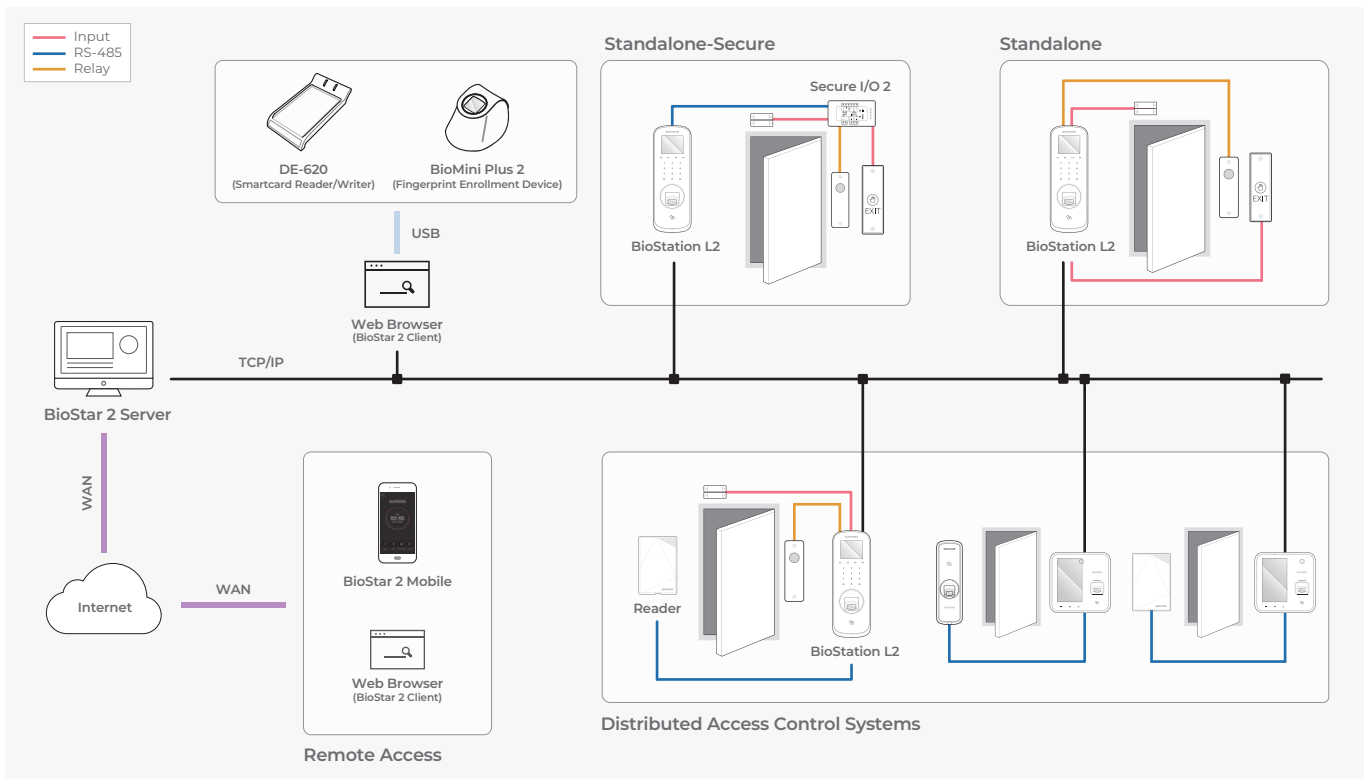
- Wiegand, RS485, TTL I/O, relay
- 125KHz EM
- 13.56 MHz Mifare/DESFire/DESFire EV1/FeliCa/NFC

Specifications

| | |
|------------------------|---|
| Biometric | Fingerprint |
| Template | SUPREMA/ISO 19794-2/ANSI 378 |
| Extractor / Matcher | MINEX certified and compliant |
| LFD | Supported |
| RF Option | 125 KHz EM & 13.56 MHz Mifare, DESFire EV1/EV2*, FeliCa, NFC |
| CPU | 1.2 GHz Quad-Core |
| Memory | 2GB Flash + 256 MB RAM |
| Max. User | 500,000 (1:1), 100,000(1:N) |
| Max. Template | 1,000,000(1:1), 200,000(1:N) |
| Max. Logs | 1,000,000(text) |
| LCD | 2-inch color LCD |
| Sound | 16-bit Hi-Fi |
| Ethernet | 10/100 Mbps, auto MDI/MDI-X |
| RS-485 | 1ch host or slave (selectable) |
| Wiegand | 1ch input or output (selectable) |
| TTL | 2ch input |
| Relay | 1 Relay |
| Tamper | Supported |
| Power | DC 12V |
| Operating Temperature | -20°C ~ 50°C (-4°F~ 122°F) |
| Operating Humidity | 0% ~ 80%, non-condensing |
| Dimensions (WxHxD, mm) | 71 x 201 x 44 (bottom)/34 mm(top) (2.80" x 7.91" x 1.7"(bottom)/1.34"(top) |
| Unit Weight | Device: 280g (0.62lb) Bracket: 61g (0.13lb) including washers/bolts |
| Certificates | CE, FCC, KC, RoHS, REACH, WEEE |

* DESFire EV2 cards are supported by having backward compatibility of DESFire EV1 cards. CSN and smart card functions are compatible with BioStation L2.

System Configurations



Suprema Inc.

17F Parkview Tower, 248, Jeongjail-ro, Bundang-gu, Seongnam-si, Gyeonggi-do, 13554, Republic of Korea
 T +82 31 783 4502 E sales_sys@supremainc.com www.supremainc.com



For more information about Suprema's global branch offices, visit the webpage below by scanning the QR code.
<https://www.supremainc.com/en/about/contact-us.asp>