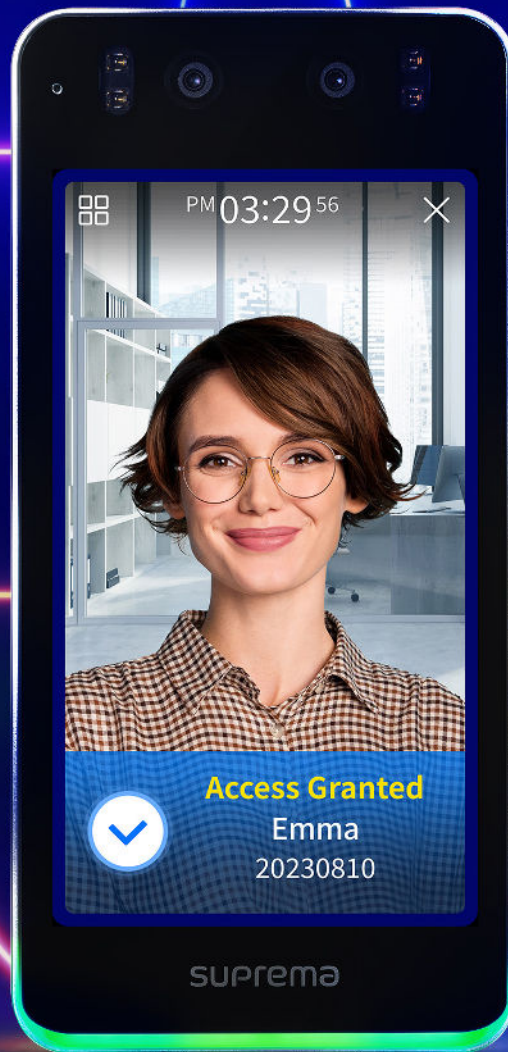




# BioStation 3

The New Door Access Experience



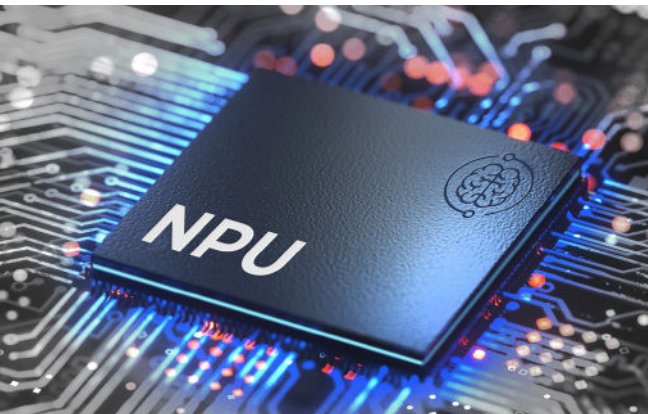
**suprema**  
SECURITY & BIOMETRICS

# Overview

BioStation 3 sets a new standard in access control, providing a new door access experience that enables improved security across all doors, for organizations of all sizes. This terminal is smaller than previous model, yet it has the largest variety of features.

With highly advanced facial authentication, access credentials and usability features, BioStation 3 makes it easier than ever to safely, securely and conveniently protect an organization's physical security and users' personal data.

## AI-Based Facial Authentication with Higher Efficiency and Performance



- Fast and Smart AI Optimized for Facial Authentication Access  
BioStation 3's NPU-optimized AI algorithm offers the highest standards in facial authentication accuracy and speed
- Nonstop Pass Trough with 0.2 Second Matching Speed
- Compatible with All Ethnicities and Facial Variations
- Protected Against Facial Spoofing
- Highly Accurate in Any Environment
- Quick and Easy Self Enrollment of Face Credentials

## Multiple Contactless Access Methods

BioStation 3 provides multiple credential options. Choose from the most convenient authentication methods — all contactless and perfectly compatible with a post-pandemic world.



Facial Authentication

Mobile Access

QR and Barcode

RFID Card



# The Highest Level of Privacy Protection

BioStation 3 takes data protection very seriously.

- ISO/IEC 27001 and 27701 certified to protect biometric data and user privacy
- Designed to comply with GDPR, one of the strictest privacy regulations
- Embedded with Secure Element (SE) and Secure Boot to protect against cyberattacks
- Completed penetration testing through a verified institution
- Provided with 'Face Template on Mobile' credential



## What is 'Face Template on Mobile'?

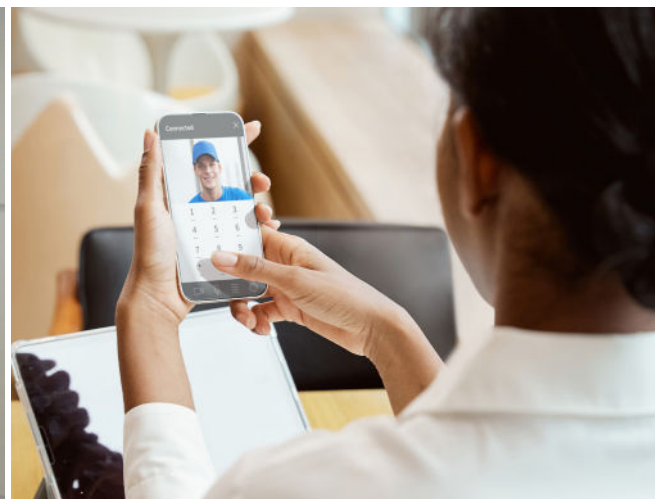
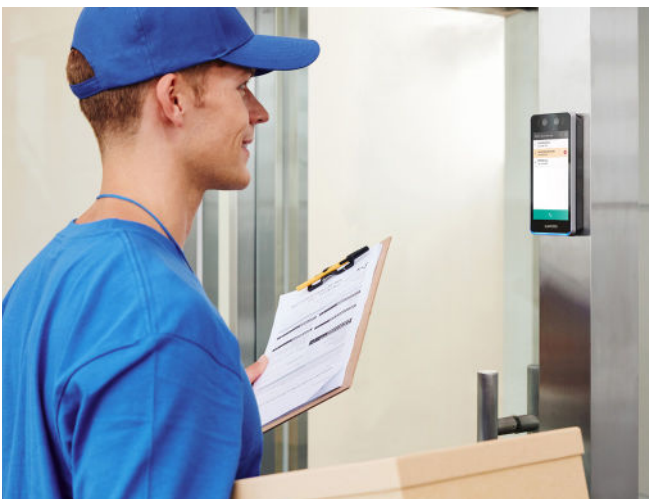
### – Own Your Own Data

Suprema's exclusive authentication method 'Face Template on Mobile' lets users enroll into an access control system and store their face profile directly on their own mobile devices. This gives the users complete control over their own ID and their privacy. Users' biometric data is not stored in company databases.

## Easy Communication Across All Access Points

BioStation 3 enables integrated management over an entire access control system.

- Communicate seamlessly with all doors via VoIP Intercom
- Enable video monitoring via RTSP(Real Time Streaming Protocol)



# Specifications

Model Name		BS3-DB	BS3-APWB
Biometrics		Face	
Credential	RF Option	125kHz EM & 13.56MHz MIFARE, MIFARE Plus, DESFire, DESFire EV1/EV2/EV3 <sup>(1)</sup> , FeliCa	125kHz EM, HID Prox & 13.56MHz MIFARE, MIFARE Plus, DESFire, DESFire EV1/EV2/EV3 <sup>(1)</sup> , FeliCa, iCLASS SE/SR/Seos
	RF Read Range <sup>(2)</sup>	EM/HID Prox/MIFARE/DESFire/HID iCLASS: 30 mm, FeliCa: 15 mm	
	Mobile	NFC, BLE	
	Scramble Keypad (PIN)	Supported	
	QR/Barcode <sup>(3)</sup>	Supported <sup>(4)</sup>	
General	CPU	1.5 GHz Quad Core	
	Memory	32 GB Flash + 4 GB RAM	
	Crypto Chip	Supported	
	LCD Type	5.5" IPS color LCD	
	LCD Resolution	720 x 1280 pixels	
	Sound	16 bit	
	Operating Temperature	-20 °C ~ 50 °C (-4 °F ~ 122 °F)	
	Operating Humidity	0 % ~ 80 %, non-condensing	
	Camera	2 MP 2 EA	
	Dimension (W x H x D)	82.5 x 171 x 23.4 (mm)	
	Weight	Device: 370 g	Device: 380 g
		Bracket: 90 g (Including washers and bolts)	
	IP Rating	IP65	
	IK Rating	IK06	
Certifications	CE, UKCA, KC, FCC, IC, RCM, BIS, SIG, RoHS, REACH, WEEE, MIC, TELEC	CE, UKCA, KC, FCC, IC, RCM, BIS, SIG, RoHS, REACH, WEEE, MIC, TELEC, ETL Listed to UL294	
Face	Authentication Distance	0.3 ~ 1.0 m (11.8"~39")	
	Authentication Height	1.4 ~ 1.9 m (55.1"~74.8")	
	Matching Speed	Within 0.2 seconds	
	Live Face Detection (Anti-Spoofing)	Supported	
Capacity	Max. User	100,000 <sup>(5)</sup>	
	Max. Credential (1:N)	Face: 50,000 / Fingerprint: 100,000 <sup>(6)</sup>	
	Max. Credential (1:1)	Face: 100,000 / Card: 100,000 / PIN: 100,000 / Fingerprint: 100,000 <sup>(6)</sup>	
	Max. Text Log	5,000,000	
	Max. Image Log	50,000	
Interface	Ethernet	Supported (10/100/1000 Mbps, auto MDI/MDI-X)	
	Wi-Fi	Not supported	Supported (802.11 b/g/n 2.4 GHz)
	RS-485	1 ch Master / Slave (Selectable)	
	RS-485 Communication Protocol	OSDP V2 Compliant	
	Wiegand	1 ch Input, 1 ch Output	
	TTL Input	3 ch Inputs	
	Relay	1 Relay	
	PoE+	Not supported	Supported (IEEE 802.3at compliant)
	Intercom	Supported	
	RTSP (Real Time Streaming Protocol)	Supported	
	USB	USB 2.0 (Host)	
	USB expansion port	Supported	
Tamper	Supported		
Power	Voltage: 12 Vdc, Current: Max. 1 A		Voltage: 12 Vdc, Current: Max. 1 A
	Voltage: 24 Vdc, Current: Max. 0.65 A		Voltage: 24 Vdc, Current: Max. 0.65 A

<sup>(1)</sup>DESFire EV2/EV3 cards are supported by having backward compatibility of DESFire EV1 cards. CSN and smart card functions are compatible with BioStation 3.

<sup>(2)</sup>RF read range will vary depending on installation environment. <sup>(3)</sup>Supports QR/Barcodes composed of up to 32 ASCII code strings. <sup>(4)</sup>Requires a separate license.

<sup>(5)</sup>The number of users registered without having any credential data. <sup>(6)</sup>If a device with a fingerprint sensor is connected as a slave, the slave device can be used for fingerprint authentication.



## Suprema Inc.

17F Parkview Tower, 248, Jeongjail-ro, Bundang-gu, Seongnam-si, Gyeonggi-do, 13554, Republic of Korea

T +82 31 783 4502 W [www.supremainc.com](http://www.supremainc.com)



For more information visit our website below by scanning the QR code.  
<https://www.supremainc.com/en/about/contact-us.asp>