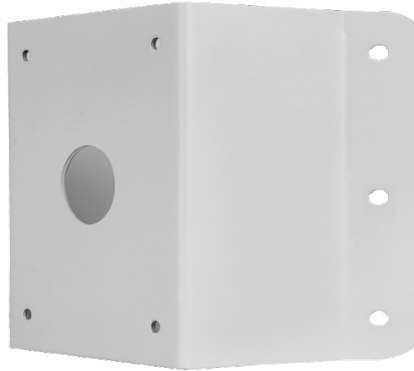


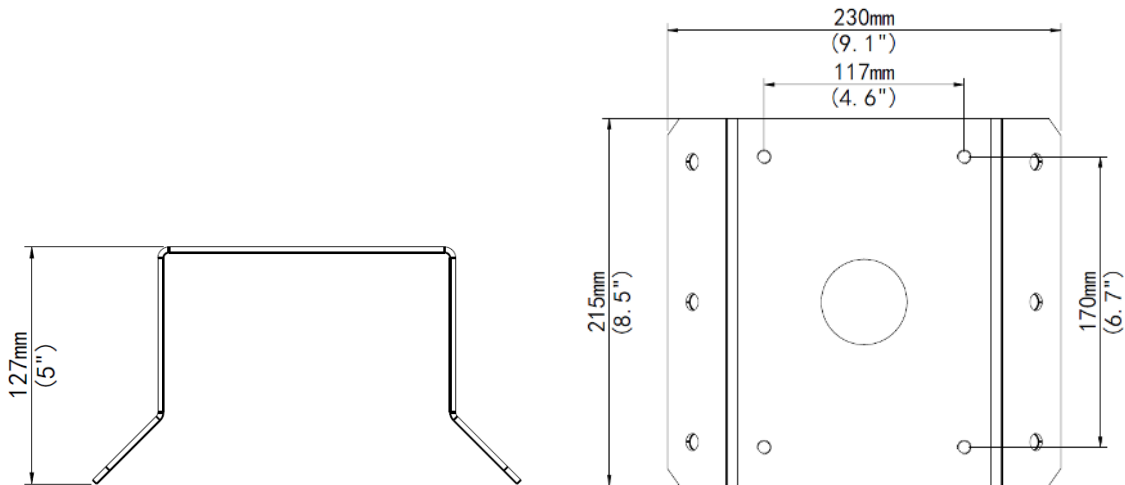
TR-UC08-B-IN PTZ Dome Corner Mount



Specifications

| | |
|-----------------------|---|
| Bracket | TR-UC08-B-IN |
| Application | Indoor or outdoor, PTZ Dome Corner installation |
| Dimensions(L x W x H) | 215mmx230mmx127mm(8.5" x 9.1"x 5") |
| Weight | 0.73kg(1.6lb) |
| Material | Aluminum alloy |

Dimensions



Zhejiang Uniview Technologies Co.,Ltd.

South Tower, Building 10, Wanlun Science Park, 88 Jiangling Road, Hangzhou, P.R.China 310051

Email: overseasbusiness@uniview.com; globalsupport@uniview.com

<http://www.uniview.com>

©2015 Zhejiang Uniview Technologies Co.,Ltd. All rights reserved.

*Product specifications and availability are subject to change without notice.